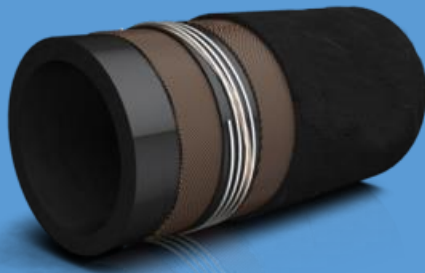












WATER SUCTION HOSE – 20 BAR



Application: Heavy duty multipurpose hose extremely tough mandrel built rubber hose, high chemical resistance (detergents, diluted acids, technical alcohol, acetone).

Features: Flexible, easy handling, kink resistant, robust, long lasting.

							
ID	OD	Wall	Working Pressure	Burst Pressure	Bending Radius	Weight	Max. Length
mm	mm	mm	bar	bar	mm	kg/m	m
16	26	5	20	60	64	0,52	61
19	29	5	20	60	76	0,60	61
25	35	5	20	60	100	0,75	61
32	44	6	20	60	128	1,11	61
38	51	7	11	33	152	1,39	61
51	65	7	20	60	200	2,00	61
63	79	8	20	60	315	2,90	61
76	93	8,5	20	60	380	3,70	61
102	120	9	20	60	510	5,20	61
127	147	10	20	60	635	7,30	61
152	174	11	20	60	760	9,70	61
203	229	13	20	60	1015	15,50	40

For more information, please contact: TechnoS Multiline LLC, Dubai, UAE

Tel: +971 (4)2237116 / 04-2223670 / 04-2237119 | Fax: +971 (4) 2279959 | Mobile: +971 (50) 6744049

Email: info@technos-me.com / tecmulti@eim.ae Website: www.technos-me.com

Construction:

Type: Mandrel built

Tube: Special elastomer, black, smooth

Reinforcement: High tensile textile cord, steel helix

Cover: Special elastomer, black, smooth with cloth impression, weather, ozone, oil and abrasion resistant.

Temperature Range:

Continuous: -30°C to +85°C